

OCTOBER, 2021

Crystal Lake Camera Club

Serving Crystal Lake, IL and Surrounding Communities Since 1980

In Memoriam

Grace Moline

(1949 - 2021)



Grace is a long-time member of the Crystal Lake Camera Club, and served as president, treasurer, and other roles in her time with us.

She will be missed.

EXPLORE THIS ISSUE

Caution, This Can Be Addictive!	Pg. 2
Club Officers	Pg. 5
Your Ideas Matter! (Newsletter Submissions)	Pg. 5
Support Personnel	Pg. 5
Club Calendar	Pg. 6
Grace Moline Obituary	Pg. 6
IMPORTANT NOTE from Your Club Officers	Pg. 7

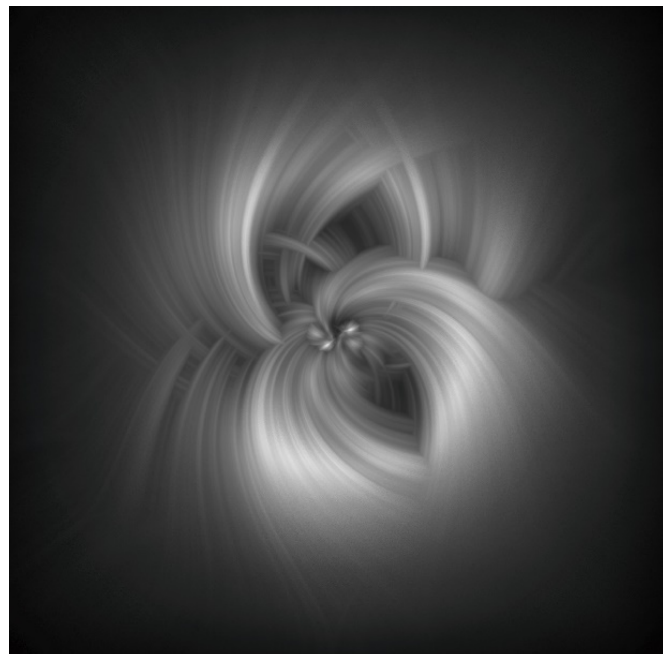
Caution, This Can Be Addictive!

Grace Moline, CLCC President

(Editor's Note: Grace sent this article to me ten days before her unexpected passing.)

Looking for something to do when it's too hot to go outside & shoot? One of the latest things going around is the *Twirl Effect*. I first heard about this from a friend when she shared the results of her work. The beauty of it is once you've gotten the hang of it, it's fast, fun, unpredictable and there's many ways you can experiment with it. You can use any picture and turn it into an abstract art design. You get to play! How many times can you do that nowadays?

I'll share what my friend Barbara did and you'll see the before & after pictures that inspired me.



(Caution, This Can Be Addictive!, Continued)

These weren't her first attempts at this (so don't judge me too harshly when you see my first attempts), but quickly your creations will develop as you experiment and mix things up. All of this can be done in Photoshop Elements which I used or Photoshop CC which Barbara used doing basically the same process. The major difference is in PS CC, you can convert your picture into a Smart Object and also you will have a few more options. There are many "How to Twirl in PS" videos on YouTube and when you become more proficient, you can multiply your picture creating even more intricate designs and patterns. Just have fun with it. These are some videos to get you started:

Using the Twirl Filter in Photoshop Elements to Make a Title Slide Background

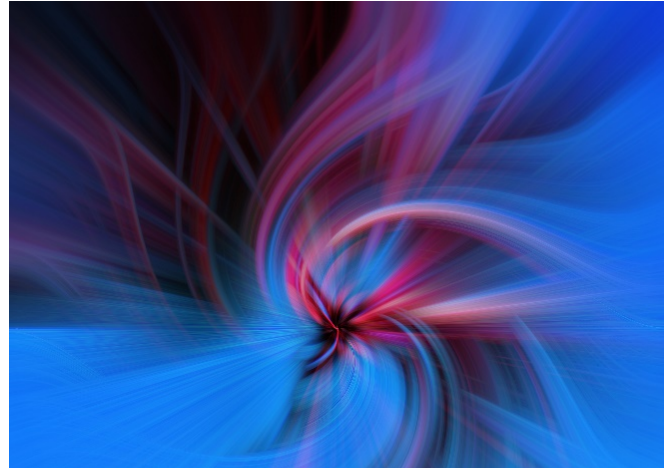
How to create abstract Twirl Art Effects in Photoshop (CC)

The Twirl Effect using Photoshop

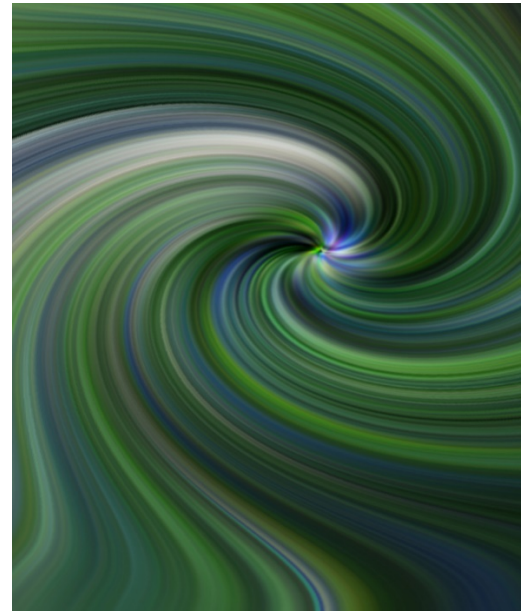
Here are some instructions you can use, but be sure to view at least one video first.

1. Make a duplicate layer. Reduce the size to 50% of the original by going to Image & Resize. Then go to Fill the Screen.
2. Go to Filter--- Pixelate. Then go to Medium strokes. There are other options and you can experiment with that.
3. Go to Filter---Blur. Then go to Radial Blur. Put Zoom at 100 % and Quality at Best. Again another opportunity to experiment.
4. Repeat Radial Blur 3 more times. Just hit Radial Blur already set at the top. Then you don't have to go through the entire process.
5. Duplicate layer. Control J.
6. Go back to Layer 1 & activate.
7. Go to Distort---Twirl. Change angle to 150. You can type it in. You can experiment here too. I've seen everything from 80 to 400. But once you use that number, it's always a good idea to keep the same number for both positive & negative number.
8. Go to the top layer & activate. Distort---Twirl. Change the angle to -150. Always a good idea to keep the number the same, whichever number you decide on.
9. Go to Blend mode which is at the top R with the default being Normal & hit the arrow down to say Lighten. This is another place where you can experiment.
10. Go to Layers and flatten image.
11. Save file in the same file you took it from.

(Caution, This Can Be Addictive!, Continued)

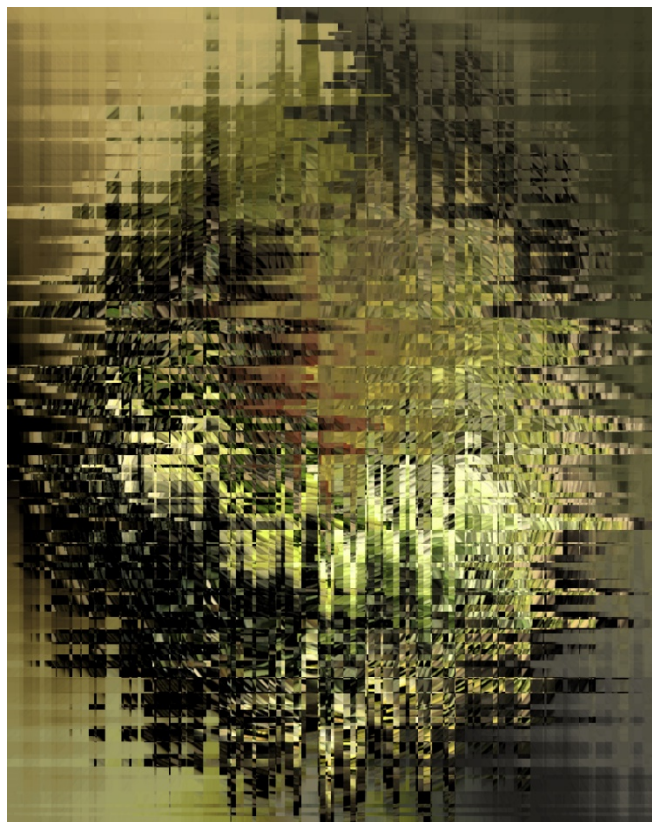


The image above is my initial attempt. The ones following are later experiments.



On the “Sandhill Crane” image, I also added under *Filter*, *Distort*, *Polarized Coordinate*. The 2nd image I shared of the Sandhill Crane was really the 3rd experiment as my 2nd image looked much the same as my 2nd image of bluebells in style & I wanted something different. On top of that, on the 3rd image I added *Wave Square*. So you can see, there are a lot of ways to go. You just have to play and enjoy. Have fun! Please share your experiments with me & if you wish, I would happily share with the club. Really, It will be so much fun to see where you could take your picture. Unleash your creativity!

(Caution, This Can Be Addictive!, Continued)



CRYSTAL LAKE CAMERA CLUB OFFICERS

See The Club Directory For Contact Information

Vice Presidents	Rich Bickham Judy Jorgensen
Secretary	Margie Paffrath Royal Pitchford
Treasurer	Andy Gruber

YOUR IDEAS MATTER!

Do you have a story, images, trip, post-processing technique, event, etc. that would be good for Camera Club members to know about? Your submissions will make this newsletter valuable! Write it up, and send it to **Steven Szalaj, Newsletter Editor** at the email address in the club directory. **Please make your submission by the 15th of the month.**

SUPPORT PERSONNEL

See the Club Directory for Contact Information

Past Presidents	Al Popp, Chuck Rasmussen	Membership Publicity	OPEN OPEN
Newsletter Editor	Steven Szalaj	Competition Chairman	Rich Bickham
Webmaster	Sandy Wittman	Competition Assistant	John Williams
CACCA Delegate 1	Lance Lagoni	Competition Assistant	Ernie Hagenow
CACCA Delegate 2	OPEN	Competition Judges	Ken Farver
Education	Peter Pelke II	Small Groups	Maureen Harris
Advisor	David Jilek	Outings	Andy Gruber
Advisor	Jim Pierce	Refreshments	Larry Swanson
Facebook Administrator	Scott Migaldi	Librarian	OPEN
		Mentor Program	Paul Minkus

LOOKING AHEAD - CLUB MEETING CALENDAR

CLCC meetings are always on the first Tuesday of each month at 7 p.m. and will remain Zoom meetings until it is safe to meet in groups. Before each meeting, members are sent the Zoom login information by CLCC Secretary, Royal Pitchford.

Competitions are always at the February, April, October and December meetings.

October 5, 2021

Competition

November 2, 2021

In-person at The Dole, 401 Country Club Rd, Crystal Lake
Jim Pierce from Downtown Photo on portrait photography

(Editor's Note: This is the obituary published in the Northwest Herald August 5 - 7, 2021. On a personal note, until I read this, I did not know that Grace and I attended the same high school, and for at least one year, at the same time!)

Grace Moline

May 7, 1949 - June 23, 2021

Grace was born in Chicago to Joseph and Evelyn Peterson. She grew up and attended public schools in her Roseland neighborhood. Graduating early from Fenger HS. Grace enrolled at Illinois State University, pursuing a degree in Special Education (hearing impaired). It was at this time that Grace met John her husband-to-be. Grace and John were married on Aug. 8, 1970. After graduation, Grace became a member of the Hearing Impaired Dept. of Hinsdale South HS. In her tenure at Hinsdale South, she taught history, made many new friends, was Teacher of the Year and was elected President of the Hinsdale Teachers' Union. She retired from teaching in 1988 when she and John moved to Crystal Lake. Grace then started a new career by enrolling at the Harrington Inst. in Chicago working for an Associates Degree in interior design. Graduating into a recession, with no jobs available, Grace started volunteering at the McHenry Co. Historical Museum. After a short period of time, Grace was named Exhibits Curator. In the next 20 years, she would combine her love of teaching history with her design skills in order to create exhibits that would bring the history of McHenry Co. to life. Her work on the Vietnam era exhibit highlighted personal narratives which she gathered from local Vietnam vets. Those personal stories, pictures and artifacts told the story of that era in our county's history. In 2011 Grace was named Illinois Museum Professional of the Year. Her last major undertaking was the Northern Ill. Quilt Fest highlighting all things quilt. Evidence of that program can be seen around the county on many facades decorated with painted quilt patterns. Grace retired from the museum but kept her job as Chair of the Historic Sites Committee. Their job is to recognize and record those buildings and sites that are significant to McHenry County's past. Grace also began to expand her love for photography. She joined the Crystal Lake Camera Club to expand her knowledge and to collaborate with people who had the same passion for this art form. She took thousands of pictures, experimented with new techniques, and even sold a picture or two. She became co-president of the club and helped to keep it active during the pandemic quarantine.

Grace was preceded in passing by her parents and an older sister Joanie. She left behind her twin sister Joyce, her husband John, and many friends and colleagues whose life paths crossed hers. Grace was active, intelligent, talented, friendly, compassionate, and strong. She was a special lady and she will be missed.

Memorial donations may be made to the charity of your choice.

A memorial get-together will be scheduled in late spring or early summer of 2022.

IMPORTANT NOTE FROM YOUR CLUB OFFICERS

CALL FOR NEW LEADERSHIP

This is an election year for the CLCC Board. We need some new and fresh people to step up and assume leadership roles. The current group has been running things for 3 years now and would like to step down. Sadly we lost Grace Moline, our president. Margie Paffrath will be moving away. Remember this club is run *by us for us*. We need new people to keep things moving along. It seems only right that we take turns doing the work that keeps it running.

We need people to fill several roles, such as;

- President OR Co-Presidents
- Treasurer
- Recorder/computer operator for competitions
- Speaker coordinator

If you are considering any of these roles and would like to speak to the person currently in that position, let us know.

We'd like to thank Royal Pitchford for stepping forward into the role of Club Secretary.

Please do not hesitate to contact one of the current board members if you are interested in a leadership position. The email addresses are in the club membership directory, or in an email from Margie dated August 9, 2021, or you can click a name below We thank you for your help!

[Rich Bickham - Vice President](#)

[Judy Jorgensen - Vice President](#)

[Andy Gruber - Treasurer](#)

[Margie Paffrath - Secretary](#)

[Royal Pitchford - Secretary](#)

