

Crystal Lake Camera Club Newsletter

Serving Crystal Lake and surrounding communities since 1980

December, 2014

Year 2014-2015, Issue 4

CLCC Links

[Website](#)

[Facebook](#)

IN THIS ISSUE:

Presidents' Column	1, 2
December Seasonal Image	1
December Iconic Picture	2
CLCC Photography Class #3	2
Member Focus - CACCA Winners	3
Tip & Links of the Month	3
The Fringe of Still Photography	4
Buffalo Snowfall Images	4
Editor & Feedback	5
Help Wanted & Opportunities	5
Charts & Statistics	5
Calendar of Coming Events	6
Humor	6

CLCC Officers

(September, 2014 - August, 2015)

Co-Presidents :

Al Popp
Chuck Rasmussen

Vice President :

Peter Pelke II

Secretary :

David Jilek

Treasurer :

Larry Swanson (Acting)

CLCC Support Staff

- **Newsletter Editor:** Rich Bickham
- **Webmaster:** Sandy Wittman
- **CACCA Delegate:** Lyle Anderson
- **CACCA Co-Delegate:** Royal Pitchford
- **Facebook:** Mario Salazar
- **Bookkeeper:** Maureen Harris
- **Hospitality Table Host:** Mariela Ryan
- **Newspaper Publicity:** Roger Willingham
- **Competition Mats:** Jeff Chemelewski
- **Meeting Refreshments:** Larry Swanson

Presidents' Column

Well, Thanksgiving is over until next year. The turkeys are safe once again. But that means Christmas is right around the corner, and Christmas is the season for **giving**. We got to thinking about that part, and the process brought us to the Camera Club.

Looking back, we have really begun to become what a great Camera Club should be. We have grown in size, we have become more knowledgeable of each other and really talk to each other, we look forward to the meetings and camaraderie and participate in them, and we invest our time and efforts to make the club better and more fun for everyone - a group (club) effort for sure.

Excitement is everywhere. So many of you want to be involved and give something back. Some of you have offered to assist in any way you can. Others of you have asked if you might be able to help with a particular event or process.

We have sort of made every month a December. Think about it. We have so many people involved with the club now. They give their time, their talents and their expertise and assist whenever and wherever they can. As we take on new adventures in the club's growth, even more of you step up and ask "What can I give?"

Trust us, we are not bashful about asking for help, but it has become a rare event. Many of you are asking us what you can do to help, and we thank you.



Many of you have given your time and talent and we now have an "Educational" program in our club, which is apart from our regular monthly meetings and is becoming hugely successful. The educational plan for the club is to cater to all levels of photography skills and attempt to offer something to every member.

We are going to implement the "Mentor" program at the start of the year, if not sooner. Consider the value of this program with just a few examples. You get stuck trying something new in photography, or a feature on your camera confuses you, or Lightroom has thrown you a curve, or Photoshop or Elements has you going crazy. Maybe there is

See **Presidents**, page 2

DECEMBER SEASONAL IMAGE

Since no one submitted a picture this month, here is one from the internet.

The front page picture (Seasonal Image of the Month) of the newsletter is meant to be chosen from entries received from and taken by club members. Your entry must be received by the newsletter input deadline. Email a jpg image to

richbickham@comcast.net

with the subject line "Front Page Image Entry - Month" where Month is the intended newsletter issue month. The picture should be seasonal. - Ed ♦



ICONIC PICTURE OF A DECEMBER DAY IN HISTORY

Rich Bickham

Last month's historic photograph (Lyndon B. Johnson taking the presidential oath of office aboard Air Force One in 1963) captured a moment that was a direct result of the death of John F. Kennedy. This month's historic photograph "Earthrise" was made possible as a direct result of Kennedy's life. It was taken on Christmas Eve, 1968 (five years and one month after his assassination) from Apollo 8 as it orbited the Earth's moon. That mission, and the subsequent moon landing of Apollo 11 the following year, was made possible by Kennedy's challenge to the nation in an address before a joint session of Congress in May, 1961 in which he said

"I believe that this nation should commit itself to achieving the goal, before this decade is out, of landing a man on the moon and returning him safely to the Earth."

His challenge was realized, but he did not live to see it.

The year 1968 was the most tumultuous of the 1960's decade. In April Dr. Martin Luther King Jr. was assassinated in Memphis, TN which spawned rioting in large cities across the country. In June Senator Robert Kennedy was assassinated in Los Angeles, CA after winning the California Democratic presidential primary. In August the Democratic National Convention in Chicago was the scene of days of antiwar protests culminating in what was termed a 'police riot' against the mostly young demonstrators, seen across the nation on network television. All the while the Vietnam War continued to escalate with continued loss of American lives. The country appeared to be spiraling out of control. It was against that backdrop that the Apollo 8 mission was launched in late December.



"Earthrise" - December 24, 1968

Bill Anders

With a crew of three astronauts (Frank Borman, Jim Lovell and Bill Anders), Apollo 8 was launched into Earth orbit on December 21 and shortly thereafter was directed toward the moon, going into lunar orbit on December 24. While orbiting the moon the three men made a live Christmas Eve television broadcast back to the "Good Earth" during which they read verses from the Book of Genesis. That telecast caused most Americans to reflect deeply on the past year's tragic and chaotic events, and provided hope and solace for them at a time when such emotions were much needed.

It was also during their time in lunar orbit that they took photographs of the lunar surface, and the Earth, including "Earthrise"*. Taken by Bill Anders with a modified Hasselblad 500EL with an electric drive using custom Kodak Ektachrome 70mm film, it shows the Earth (partially obscured by the moon's shadow) rising above the lunar horizon. The image provides a sharp contrast between a dead, barren lunar landscape and our beautiful home planet 'floating' in the vacuum of space - an isolated, fragile and vulnerable sphere of life seen in a context never before displayed with such clarity. It helped inspire the creation of the Environmental Protection Agency in 1970, and the late California wilderness photographer Galen Rowell characterized it as "... the most influential environmental photograph ever taken."

* The photograph has been cropped to eliminate a large portion of the black void of empty space above the Earth and some of the lunar landscape on the right side, to reposition the Earth so it is more aligned with the "rule of thirds". - Ed ♦

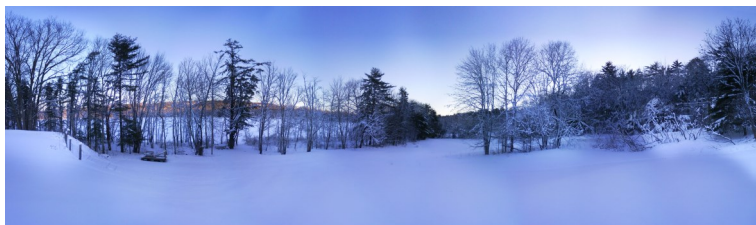


ASK A PRO

Jim Pierce

Send your questions to:
downtownprophoto@sbcglobal.net

No column this month.



THIRD CLCC PHOTOGRAPHY CLASS PLANNED

The Crystal Lake Camera Club will hold its third photography class of a continuing series in January.

An Introduction to Lightroom and More
Tuesday, January 13, 2015
7 - 9 p.m.
8678 Ridgefield Road
Crystal Lake, IL 60012

CLCC members: Free

Non-members: \$25 which includes CLCC annual membership

The class will be and will be lead by Tom Mickow. It will discuss Lightroom concepts, how it compares to & fits with other programs like Bridge & Photoshop, setup/catalog management, and organizing images in the Library module. It will also lightly touch on the Develop module while running through some examples of a typical Import --> Organize --> Develop --> Export workflow, but the overall focus will be on importing & organizing.

Contact Chuck Rasmussen @ chuckr@camira.com for registration. If you have other questions about course details send them to tmickow@hotmail.com. ♦

Presidents, from page 1

a piece of camera equipment you are considering getting, but just aren't sure if it is right for you. We could go on forever with considerations that need answers. Now you will have them. We have many that have offered their time and talents and are willing to give you help when you need it. We can always use more talented people who would like to give of themselves to help and assist those who request help. Just let us know how you want to contribute.

We have a new Crystal Lake Camera Club Facebook page. Those of you who would like to upload some of your photographs to the page will now have their own folder in which they can display their own pictures. Obviously, if you are concerned about copyrights you can produce small files, put your name on each photograph or both. Regardless, use the page to share so others may see what we are accomplishing in our club. Take a look at the new Facebook page to see what the labor and joy of sharing our photographs has created for us. We get hits on it every day now, and more and more of you are uploading your pictures for the viewing public to see. From the comments we've received, you are providing them joy and delight.

Yes, this is the season for giving. There are multitudes of opportunities available for you to do so. Enjoy the Christmas spirit, the holidays, the opportunities for giving - and look to the future with a smile.

To all that have been so benevolent and have offered their unique talents and time to assist us this past year, we greatly thank you for **giving** so much and making our club so much fun.

Merry Christmas to everyone, and a very happy New Year!

Chuck & Al

MEMBER FOCUS

NOVEMBER CACCA COMPETITION WINNERS

Congratulations to the following winners in the November CACCA photograph competition held on November 8 :

Lyle Anderson:

"Majestic Waterfall - Iceland" - Large Color - Award

"Moss Covered Lava Bed" - Large Color - Honorable Mention

Jeff Chemelewski:

"Iceberg Reflection" - Large Color - Honorable Mention

Bob Popelka:

"Tweety Bird" - Small Color - Honorable Mention



Moss Covered Lava Bed - Lyle Anderson



Iceberg Reflection - Jeff Chemelewski

Lyle Anderson's photograph "Majestic Waterfall - Iceland" was printed in last month's newsletter*.

Bob Popelka's photograph was not available at publication time.

* Lyle's photograph was mistakenly titled "Gigantic Waterfall - Iceland" in the October newsletter. - Ed

LINKS OF THE MONTH

Submitted by Larry Swanson :

Maybe our members would like to go to Wauconda to see a National Geographic display of 50 "The President's Photographer" photos. Admission is \$6 and the exhibit runs through January 11, 2015.

<http://eventful.com/wauconda/events/presidents-photographer-50-years-inside-oval-offic-/E0-001-076994960-7>

Submitted by Jo Novak :

Here is a site I found that is good for beginners - "Click it up a Notch". Courtney Slaznik has a lot of good tutorials and they are all free. Become a member for free and enjoy the tons of tutorials on how to improve your photos. You can also "Like" her on Facebook.

<http://clickitupanotch.com/2010/09/shooting-in-manual-the-basics/> ◇

TIP OF THE MONTH

Submitted by Chuck Rasmussen

Here is a sheet of suggestions for good composition compiled by the late John Kohout.

- 1) **Move in Close** – Have the main subject fill the frame unless the surrounding is part of the story. Move in or use a telephoto lens to accomplish this. Don't include anything not having to do with the subject.
- 2) **Use the rule-of-thirds method** – Avoid cutting the scene in half with strong lines. If the sky isn't beautiful cut it as much as possible. Mountains look higher if you cut them off at the skyline.
- 3) **Placement of the center of interest** – Not all pictures have (or should have) a center of interest. If there is a center of interest, never place it in the middle.
- 4) **Choice of vertical or horizontal** – If a scene has mostly horizontal format lines, use horizontal format. If vertical lines, vertical will be more pleasing. Horizontal expresses peace and tranquility; vertical expresses strong and bold.
- 5) **Avoid group monotony** – Don't line group elements up in a row. Have them do something if possible.
- 6) **Balance your picture** – Dark objects are "heavier" visually. If all dark is on the top, or one side of picture is all dark the picture appears unbalanced and makes viewers uncomfortable. Avoid imbalance with larger and smaller objects also.
- 7) **Include foreground objects** – This is very important in scenic photography. Balance a distant scene with something or someone in the foreground. For critical depth of field it is important to use a tripod. The foreground can include framing.
- 8) **Use of framing** – This is the simplest trick in good photography. Use it to cover empty sky or uninteresting foreground. When using tree branches try to include some of the trunk. Framing must usually be as sharp as the rest of the picture. However it is possible to use a foreground which is very out of focus for framing, e.g. colored leaves. This is not easy to do, but is very effective when handled properly. It must be done with a telephoto lens for shallow depth of field.
- 9) **Leading lines** – People enjoy a picture more when lines lead into the picture the way we read (L to R). The opposite way is not necessarily wrong and can also be pleasing. Never begin a line in a corner – go either above or below the corner with a leading line.
- 10) **Use a stopper** – A line leading in can also lead the eye out of the picture. Something is needed to stop the eye and keep it in the picture, e.g. a tree or open gate.
- 11) **Avoid mergers** – Check for a merger of lines or subject with the background. This is easy to overlook. Such mergers distract depth perception and perspective, merging the subject and background into one plane. Use care so that the

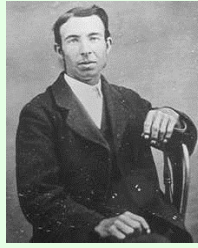
See Tip, page 4.

THE FRINGE OF STILL PHOTOGRAPHY *

Snowflake Bentley

Rich Bickham

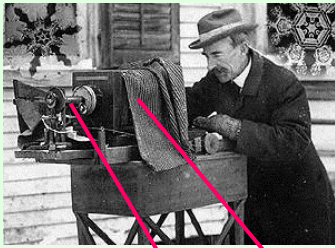
Snow is a weather phenomenon experienced at one time or another by most of us, and we typically either love or hate it at any particular time of our lives. Wilson A. Bentley (1865 - 1931) was born in Jericho, Vermont - a farming village whose annual snowfall averages 120 inches. From a young age he developed a love for, and fascination with snow. He devoted his life to studying and photographing it, and became more widely known as Snowflake Bentley. Bentley did not focus on snow-covered landscapes or objects, but rather on individual snowflakes themselves.



Wilson A. Bentley

At the age of fifteen years he started trying to draw snowflakes with the aid of a microscope his parents had given him. Most of the time the snowflakes melted, blew away or evaporated before he could finish, but he managed to create about a hundred drawings a year for three years by catching them on black velvet and working outside, sometimes in sub-zero temperatures. During that time he learned much about their beauty, noting their crystalline nature, their hexagonal symmetry, and that no two snowflakes appeared to be the same.

"Under the microscope, I found that snowflakes were miracles of beauty; and it seemed a shame that this beauty should not be seen and appreciated by others. Every crystal was a masterpiece of design and no one design was ever repeated. When a snowflake melted, that design was forever lost. Just that much beauty was gone, without leaving any record behind." - Wilson Bentley - 1925

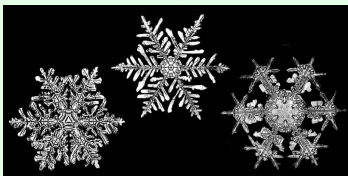


Bentley with microscope & camera

He repeatedly asked his parents to buy him a camera (which was quite expensive in those days) so he could photograph snowflakes instead of having to sketch them. At the age of seventeen, his parents spent the bulk of their savings to buy him a bellows camera.

Bentley spent over a year experimenting with the microscope-camera combination. It was not until 1885 at the age of nineteen that he perfected his technique and became the first person to photograph a single snowflake.

During the creation of his process he developed a light-tight optical coupler between his bellows camera and his microscope (which had to be rotated 90° from its normal orientation). His velvet cloth was replaced by a piece of blackboard on which he caught snowflakes, immediately transferring them to a glass microscope slide which he then photographed before it would melt or evaporate. His technique was so successful that it is nearly identical to methods used today. Below are a few of the 5000-plus images that he captured over his lifetime (upper left image is



one of his early successes).

* This column (the thirteenth in a series) deals with areas that are peripherally related to

BUFFALO AREA HISTORIC SNOWFALL IMAGES



Resident Digging Out Driveway - Depew, NY



Snow-Capped Homes - West Seneca, NY

These images were captured by Buffalo News Chief Photographer Derek Gee as he flew over the Buffalo area in a helicopter in the aftermath of the epic pre-Thanksgiving snowfall this year. Some areas received up to 90 inches of snow over several days.

While we always complain about winter snow in the Chicago area, looking at these pictures suggests that maybe we don't really have it so bad.

The homes on the left look more like cars in a parking lot.

More pictures can be found at the website below.

http://www.syracuse.com/news/index.ssf/2014/11/buffalo_snow_record_lake_effect_storm_tug_hill.html ◇

Tip, From page 3.

background makes the subject stand out.

- 12) **Placement of a moving subject** – A subject in motion should be coming into picture, not leaving it. It is best if done L to R but the opposite is not necessarily wrong. An exception could be if you are trying to express something by other placement.
- 13) **Face toward the center** – Same principle as #12. The subject should not be looking out of the picture. Have more space in the direction the subject is looking or moving. This applies to flowers as well as living creatures.
- 14) **Eliminate distractions** – Move or eliminate distractions. Hide them behind a tree or fence. If neither works use a longer lens to focus only on the subject and throw distractions out of focus. Check for bits of rubbish which can ruin a good picture.
- 15) **Placement of a person in scenery** – For vacation photography, if a person occupies more than 1/4 of the frame it is no longer a scenic picture. Have them look into the scene, not at the camera.
- 16) **Simplicity and unity** – Don't make a picture too busy. Avoid too many objects or subjects. In general, simple pictures are best.
- 17) **Consistency** – To show height have the subject in the upper part of picture. To show depth have the subject in the lower part of picture.
- 18) **Trick of imagination** – To show something not in the picture (e.g. people walking out of church when only a few were present), show the few in the scene with one of them walking out of the picture. This gives the impression that many people were there. Leave something for the viewer to imagine.
- 19) **Odd and even numbers** – Odd numbers are generally more appealing than even numbers. If you can't avoid even numbers, don't line them up in a row, or space them evenly.
- 20) **Check color proportion** – Try not to have two predominant colors 50/50 in the picture. A 20/80 proportion would be better.

In general, when you show your pictures, you are saying: "Look at this." or "Listen to me." If the above principles do not fit with what you are trying to show or say them do your own thing. Express yourself. ◇

FROM THE EDITOR

Rich Bickham

This month's "The Fringe of Still Photography" will be the last regularly scheduled column of the series (I may write an occasional new column from time to time should an appropriate topic present itself - guest columns will also be considered). I have thoroughly enjoyed researching and writing this column over the past year, and I hope our readers have also enjoyed it, perhaps gaining some different perspectives on photography (the September newsletter survey showed a medium to high interest level among readers).

Starting early next year I will begin a new series of columns which will be titled "It's between You and Your Subject". As the name suggests, it is about your camera and will specifically discuss the technology contained within what is a complex computing and imaging platform. Each month the technology of a different section of today's DSLR camera will be discussed. I am looking forward to getting started on what hopefully will be a popular and informative series of columns. ◇

OPPORTUNITIES

Get your photography questions answered or your problems solved with our "Ask a Pro" program. Submit queries to downtownphoto@sbcglobal.net, and Jim Pierce will provide an answer or solution to your inquiry in the next newsletter.

The front page picture (Seasonal Image of the Month) of the newsletter will be chosen from entries received from club members. Your entry must be received by the newsletter input deadline. Email a jpg image to richbickham@comcast.net with the subject line "Front Page Image Entry - Month" where Month is the intended newsletter issue month. The picture should have a seasonal theme. ◇

CORRECTION

On pages 4 & 5 of the November newsletter the title of Lyle Anderson's award winning photograph is incorrect - it should be "Majestic Waterfall - Iceland". Ed ◇

READER FEEDBACK

No feedback was received this month. :-)

Reader feedback should be sent to richbickham@comcast.net

HELP WANTED

We are in search of a volunteer to be assistant editor of the newsletter. Duties include assisting in preparation and pre-publish review of the monthly issues, and taking over editor responsibilities should current editor Rich Bickham be unable to perform editor duties in any given month(s). Rich will provide training and guidance. A list of recommended attributes is in the April, 2014 newsletter (page 4) which can be found in the Newsletter section of the CLCC website. Interested individuals should contact Rich at richbickham@comcast.net.

The club is in need of a Treasurer. Term of office is one year (current term runs through 8/31/15). Duties include assuming responsible for all funds owned by the club, keeping full and accurate accounts of all receipts and disbursements of the club, preparing a monthly club budget report, and maintaining club finances. Contact Chuck Rasmussen at chuckr@camira.com or Al Popp at skip3917@sbcglobal.net if interested.

We are always looking for good photography tips for the "Tip of the Month" and interesting links for "Links of the Month" sections of the newsletter. If you have something helpful to share with our club members (which includes both professionals and novices so both basic and advanced topics are welcome), send them to richbickham@comcast.net before the newsletter input deadline. ◇

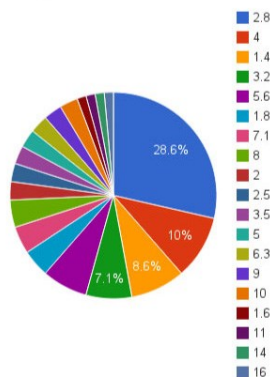
DECEMBER MEETING SHOW & TELL CHALLENGE

Due to competition, no Show & Tell this month.

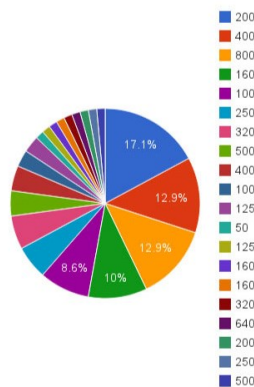
CHARTS AND STATISTICS

This data was compiled and published in 2012 by Reuters news agency. It shows camera settings used by their photographers (worldwide) to take what they selected as the 95 best photographs taken in 2012 (camera make, model & lens types were shown in the November newsletter).

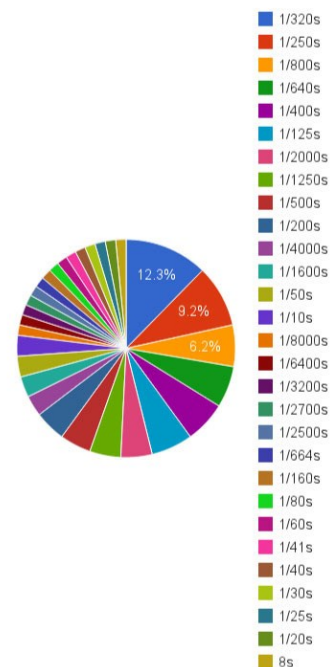
F Stop



ISO



Shutter speed



Combining the results from all six charts (above three and the three from November) suggests the most popular combination would result in a photograph shot using a Canon 1D Mark IV with a 16-35mm lens, set at 1/320 seconds, f/2.8 and ISO 200. Of course this does not mean that any one of the 95 selected photographs actually used this combination.

Sources:

<http://camerahoarders.com/reuters-most-popular-cameras-and-settings-for-2012/#more-1135>

<http://petapixel.com/2012/12/02/the-most-popular-cameras-and-settings-for-reuters-best-photos-of-the-year-2012/> ◇

CALENDAR OF COMING EVENTS - December, 2014 & January, 2015

DATE	TIME	LOCATION	DESCRIPTION	NOTES
December 2, 2014	6:15 - 7:00 p.m.	Home State Bank 611 S. Main St., CL Community Room	"Drop in Early" mentoring	1
December 2, 2014	7:00 p.m.	Home State Bank 611 S. Main St., CL Community Room	CLCC December meeting - Competition night . Donuts and coffee from Country Donuts in Crystal Lake are provided by club member <i>Larry Swanson</i> .	1
December 13, 2014	8:30 a.m.	Colonial Café 5689 Northwest Hwy., CL	Saturday morning PhotoBug breakfast meeting	2
December 13, 2014	12:30 p.m.	Christian Church of Arlington Hts. 333 W. Thomas St. Arlington Heights, IL	CACCA delegates meeting & competition judging	3
December 23, 2014			Deadline for January newsletter inputs	4
December 30, 2014			Target date for January newsletter email distribution	
January 6, 2015	7:00 p.m.	Home State Bank	CLCC January meeting - Topic: Photoshop - <i>Tom Hughes</i>	1
January 10, 2015	8:30 a.m.	Colonial Café	Saturday morning PhotoBug breakfast	2
January 10, 2015	12:30 p.m.	Christian Church of Arlington Hts.	CACCA delegates meeting & competition judging	3
January 13, 2015	7:00 - 9:00 p.m.	8678 Ridgefield Rd., CL	CLCC Class - Introduction to Lightroom - <i>Tom Mickow</i>	

Notes:

- 1) CLCC meetings are held the first Tuesday of every month. Home State Bank is located in Crystal Lake. It's the large building behind the drive-up just southeast of the intersection of Route 14 and Main Street. The Community Room is on the lower level - take the elevator just inside the south entrance.
- 2) The PhotoBug Breakfast meeting provides an opportunity for open conversation related to photography in general, plus good food and fun. Who knows, you may take home some great tips and ideas that help you capture better pictures. Don't dress up – it's all informal. It's a great way to get to know the club members on a more personal level too. This event is held at 8:30 a.m. on the second Saturday of each month.
- 3) The monthly CACCA delegates meeting and interclub competitions are held on the second Saturday of each month. Those interested in attending should contact *Lyle Anderson* at lyleandr@sbcglobal.net or *Royal Pitchford* at rpitchford@live.com - you may be able to catch a ride with them.
- 4) Email to richbickham@comcast.net.

PRINTING THE HUMOR WE HOPE **YULE** LIKE

